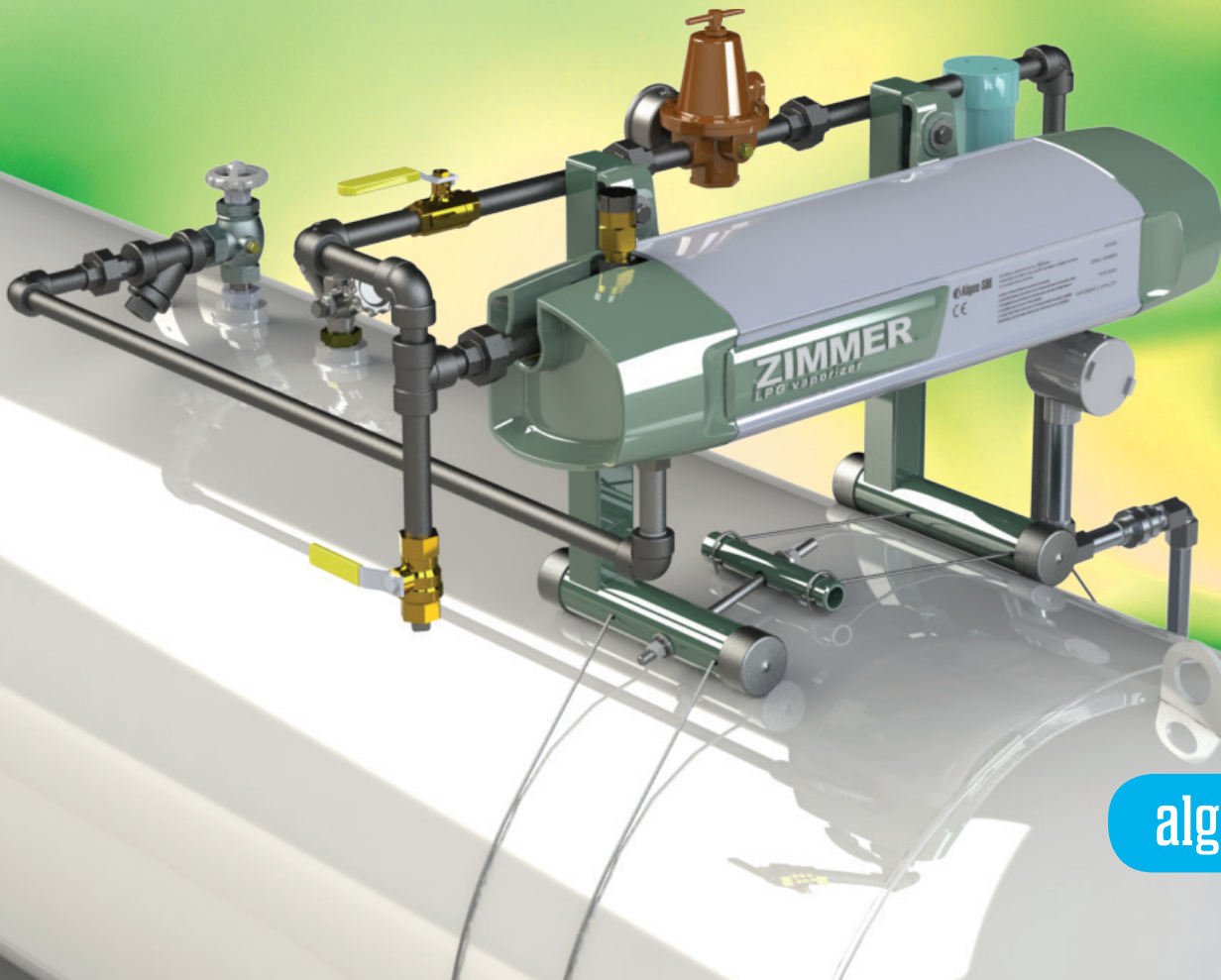


Zimmer™

Dry-Electric LPG Vaporizer



Dry-Electric LPG Vaporizer

ZimmerTM is the most hassle-free, easy-to-use vaporizer on the market. It offers a compact, affordable, energy-efficient design and requires virtually no maintenance. When quality, simplicity and reliability are your priorities, **just choose Zimmer.**

Key Points

→ Hands Down the Most Reliable and Trouble-Free Vaporizer Available

→ Energy-Efficient, Self-Modulating Heaters – Only Uses the Required Energy

→ Easy Access to All Maintainable Components

→ Dry-Electric Design – No Water, No Glycol to Maintain

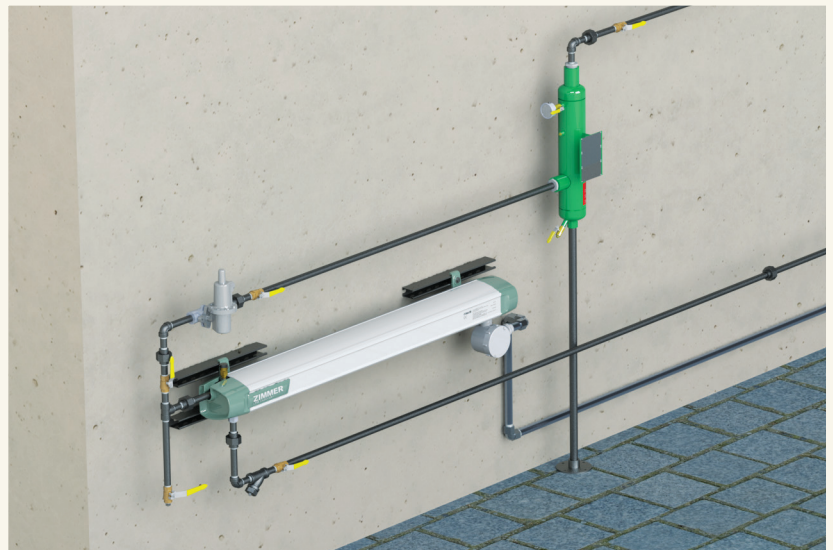
→ Aluminum Construction – Corrosion Free

→ Easy to Install – Multiple Mounting Options

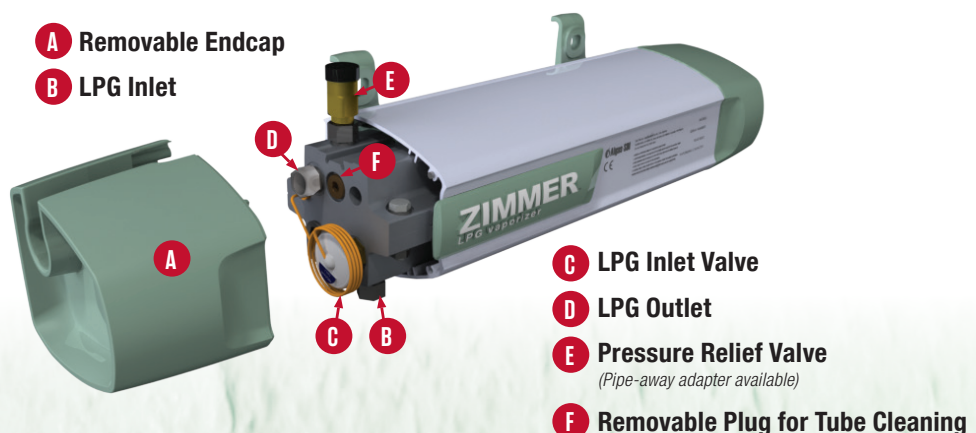
→ 25 to 150 kg/hr* – Easily add in parallel for even Greater Capacities

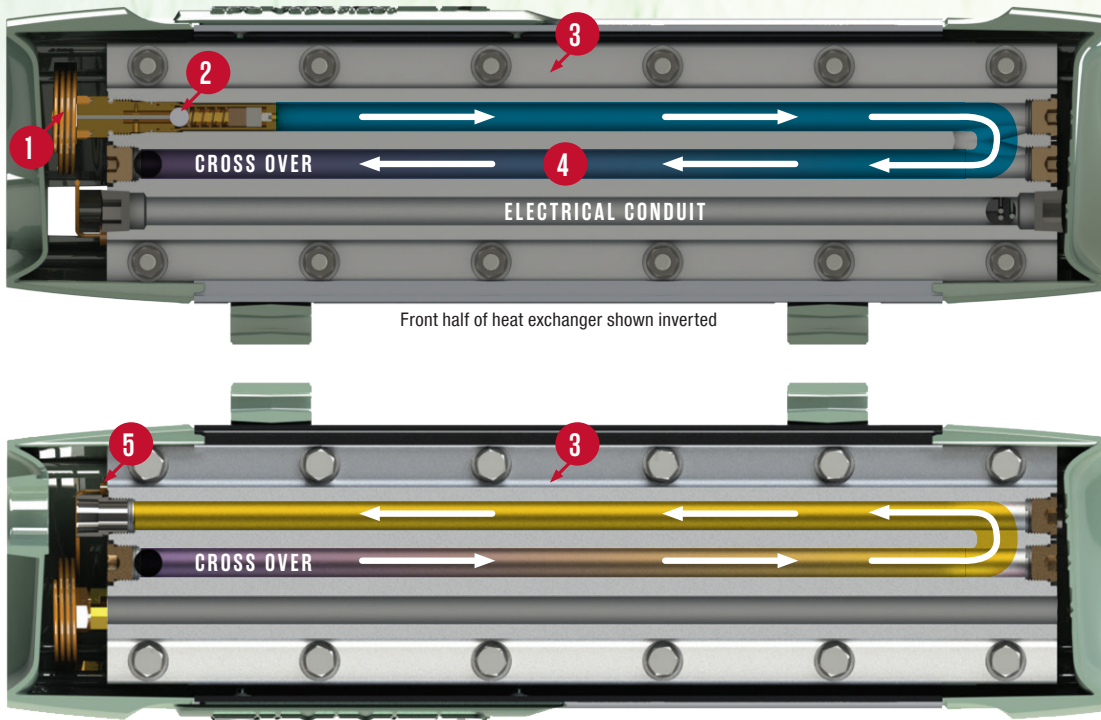
→ Start-up in less than 60 seconds – LPG vapor when you need it

*Not all sizes are available in all markets



If low cost of ownership of a vaporizer is important to you or your customers, **Algas-SDI**, the pioneer in dry-electric vaporizers, has the solution for you. Dry-electric means more reliable operation and less maintenance when compared to other vaporizer types. The **Zimmer** requires almost zero maintenance. In the event that the vaporizer becomes clogged for any reason, it can be easily cleaned onsite without removal.





Zimmer is protected under various granted and pending patents around the world. Please go to www.algas-sdi.com/patents for more details.

The technology behind the dry-electric **Zimmer** is advanced, yet simple to operate. Algas-SDI innovated every element of the **Zimmer** design ensuring years of safe, reliable, affordable, and easy-to-use LPG vaporization.

Operational Overview

Liquid LPG enters the **inlet valve** **1** and is controlled by a metal-to-metal **seat and ball** **2**. Infinite seating positions of the ball provide repeatable and reliable operation.

Energy transfers from the **heat exchanger** **3** into the LPG as it passes through the easy-to-maintain **tubes** **4**, causing the LPG to boil. The aluminum heat exchanger provides excellent heat transfer and corrosion-free operation. Energy drawn from the heat exchanger is replenished by energy efficient, self-modulating heaters, consuming only as much energy as required for vaporization. Heaters operate without troublesome switches, sensors, contactors, and other controls.

Exiting LPG vapor heats or cools a **temperature-sensing bulb** **5**, providing feedback to the **inlet valve**. The inlet valve combines this feedback with pressure feedback to ensure only superheated LPG vapor exits the **Zimmer**.

IDEALLY SUITED FOR:



Hotels
& Resorts



Backup
Generators



Hog & Poultry
Barns



Ski
Areas



Restaurants



Small-Medium
Factories



LOT
Installations



Temporary
Heat



HVOF
Coatings

Start-Up: Less than 1 minute
depending on temperature

algas-sdi.com

Vaporizer Type/Model*	Indirect Dry-Electric Feed Out					
	Model	Z25	Z40	Z50	Z100	Z150
Hazardous Area Classification	Class I, Division 1, Group D, T3; Ex d IIA T3 Gb					
Approvals	UL/ULc, CE (ATEX & IECEx), PED (SEP)					
Vaporization Capacity**	Kg/hr	25	40	50	100	150
	US Gal/hr	12.5	20	25	50	75
	MMBTU/hr	1.1	1.8	2.2	4.5	6.8
Liquid Inlet Connection	1/2" FNPT		1/2" FNPT		3/4" FNPT	
Vapor Outlet Connection	1/2" FNPT		1/2" FNPT		3/4" FNPT	
Design Pressure (MAWP)	250 psig - 17.2 barg					
Relief Valve Set Point	250 psig - 17.2 barg					
Hydrostatic Test Pressure	375 psig - 25.9 barg					
Unit Dimensions	26.7" L x 9.5" H x 8.3" W			67.2" L x 9.5" H x 8.3" W		
	677 mm L x 241 mm H x 210 mm W			1706 mm L x 241 mm H x 210 mm W		
Shipping Dimensions	34" L x 11" H x 14" W			75" L x 11" H x 14" W		
	863 mm L x 280 mm H x 356 mm W			1905 mm L x 280 mm H x 356 mm W		
Shipping Weight	55 lb / 25 Kg			145 lb / 66 Kg		
Optional Accessories	Tank Mount Kit; Tank Mount Piping Kit; Wall Mount Kit; Strainer and Piping Kit for Wall Mount; Regulator/Gauge for Wall Mount; Drain Valve Kit			Floor Mount Kit; Wall Mount Kit; Strainer and Piping Kit; Regulator/Gauge Kit; Drain Valve Kit		

* Not all sizes available in all markets **Capacity rating may vary with ambient conditions

Algas-SDI is the world's leading provider of equipment for the standby and transportable fuels business for the last 80 years. We take pride in creating high-quality engineering design and packaged systems, with distribution to more than 87 countries worldwide. Equipped with an experienced in-house engineering and design team, Algas-SDI ensures quality control with ISO 9001 certification and offers the requisite code compliance.

Algas-SDI. We make transportable fuels easy to use.



151 S. Michigan Street
 Seattle, WA USA 98108
 P 206-789-5410 | F 206-789-5414
 sales@algas-sdi.com



algas-sdi.com

